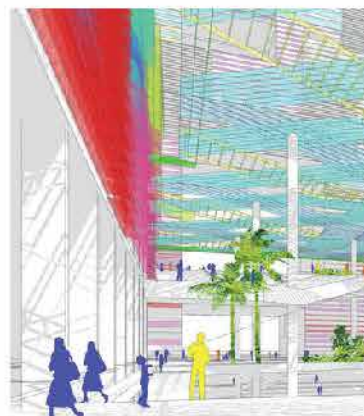
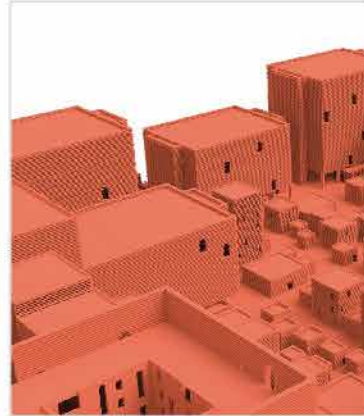




WORLD TRADE CENTER™ NOIDA

**WTC
SIGNATURE**





The World Trade Center, Noida has emerged from a rich mix of ideas generated from India's first and largest global architectural design competition in the commercial segment. A total of 713 registrations from 67 countries for the competition, resulting in 201 entries gives it the pedigree of a world citizen.

Iconic tall tower on Yamuna Expressway

A beacon of pride that stands tall on the Expressway. WTC Signature is the icon of prosperity visible from afar. It symbolises power, prosperity and prestige. The tower arises from a fertile bed of ideas emerging from India's largest global design competition.

- Grand lobby
- Seminar and conferences
- Business center
- Premium offices



360 degree sunset views of the Yamuna flood plain

Established on the ecological nerve-point of the Yamuna flood plain, the tower allows access to uninhibited vistas that afford a more serene and productive work environment.

Exclusive WTC Club experience

The WTC Club, all over the world, is the centerpoint for the topmost echelons of networking. It provides access to the best and the brightest minds in business and privileged access to WTC clubs globally.

- Dedicated relationship manager
- Preferred access to all calendar events
- Upgrades and discounts on business transactions*
- Concierge services
- Fine dining, terrace bar and sky deck

Helipad access

As the axis of international business, World Trade Center, Noida, will feature some of the most pivotal meetings and conferences for the delegates who don't always have time to negotiate through the city traffic. The Helipad atop WTC Signature allows quick, direct and efficient access.

Privileged access to Venture Accelerator Services at V@C

In line with enabling businesses big and small, the World Trade Center, Noida offers V@C services that include Entrepreneurship Enablement, Capital, Market Information, Research and Business Center facilities.

WTC enabled business and convention centre

The World Trade Center, Noida, will serve as the fulcrum of trade in the region. Its convention center services, seminars, conference facilities and trade events, enabled by the World Trade Center Association, will allow local businesses to interact on a global arena through cutting edge facilities and conveniences.

Excellent Infrastructure

Mainstream Green principles ensure sustainable solutions with the same level of robustness in operation.

Efficient Modular Floor Plates

Starting from 450 sq ft to 24,000 sq ft

Built to Global Standard

- Built to U.S. office parameters
- 4.6m (15') floor to floor height for service space redundancy
- Modular office bays in multiples of 450 sq.ft. for maximum flexibility
- High speed elevators
- Modular service tap-offs and smart metering

Integrated Facilities

VAC, Exhibition Spaces and Seminar Rooms

RIVERSIDE RESIDENCES

Provide a key mixed use function of live work spaces. Modern duplex and double height offices, with an entrance from the viewing deck at the first floor. Flexible and spacious, these offices serve as an ideal workplace for design studios, Private Equity Firms, CAs and other such businesses. Serviced Apartments are present from 2nd to 6th Floor & Hip Lofts at 7th & 8th Floor with dedicated Club & Infinity Pool at 8th Floor.

ARMATURE

The Armature is a mnemonic green thread that is the DNA of the iconic metamorphosis of the WTC complex. If the site is the city, the thread is its museum, a repository of data that both allows and informs the transformation that makes it iconic at each level. In the city the landscape is of memory, while the mnemonic thread is both the garden within the fields, impacted by the minutest change in environment, as well as the very DNA that eventually mutates and becomes the future.

HOTEL

At south corner of the WTC Complex is a Hotel, managed by a renowned international hospitality operator. It offers excellent facilities in tune with smart and luxurious stay options.

- 165 rooms
- Club, Specialty Restaurant, Fine Dining
- Gym, Spa, Pool
- Banqueting
- Lobby/ Reception

WTC SIGNATURE

It is a tall tower of around 3.5 L sqft., containing most premium offices and business facilities on its 19 storeys. Symbolizing power, prosperity and prestige the tower arises from India's largest global design competition.

- Grand Lobby – WTC Club/ Amenities at Ground & First Floor
- Seminar & Conferences
- Business Centre
- Premium IT & ITES Offices in upper Floors

PLAZA

TEC 1 and TEC 2

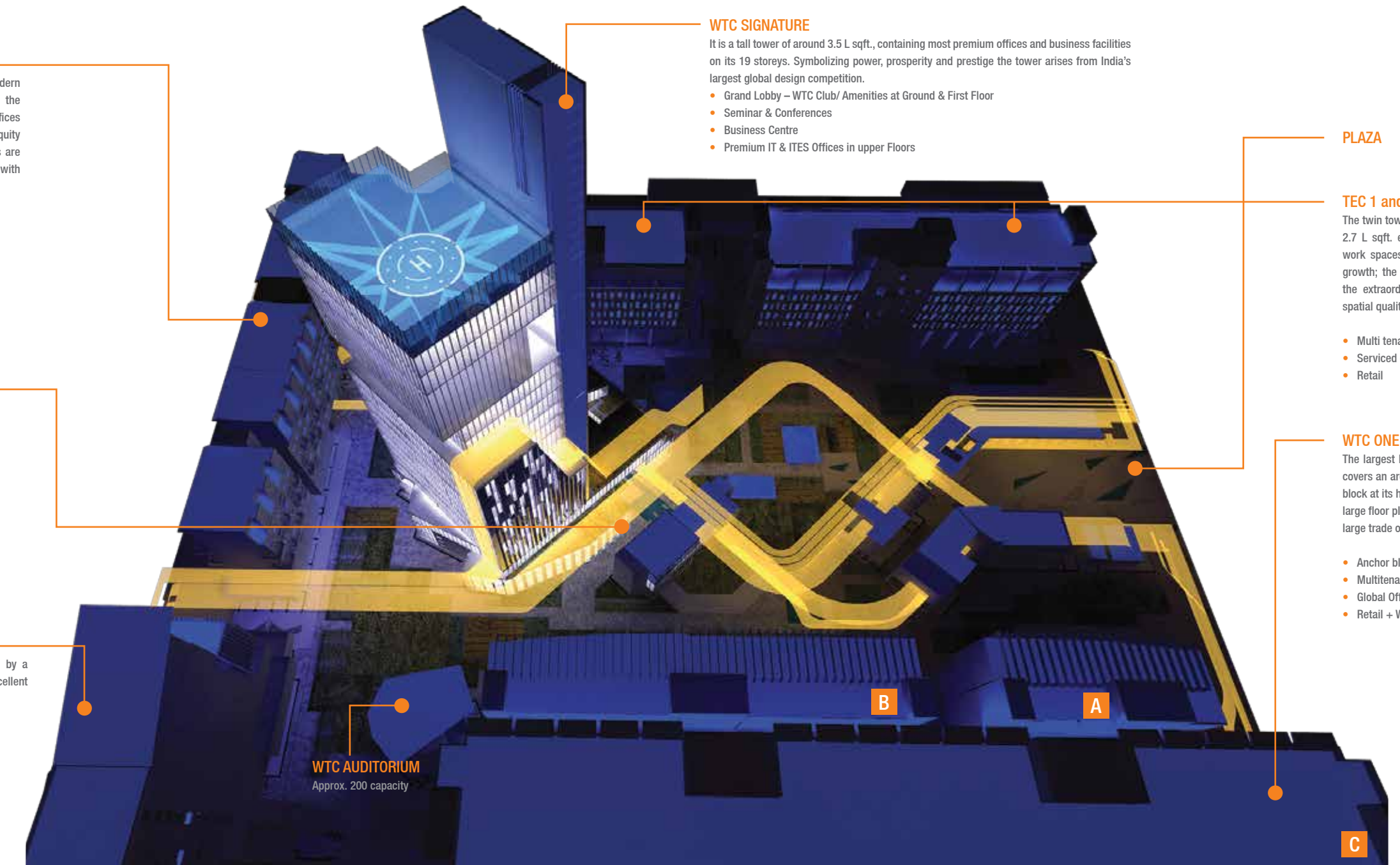
The twin towers are 8 storey high, covering an area of 2.7 L sqft. each, consisting of flexible and efficient work spaces for large organizations on the path of growth; the towers create their unique presence by the extraordinary aesthetics of its façade, and the spatial quality of its bio atrium.

- Multi tenant office
- Serviced offices
- Retail

WTC ONE

The largest building in the WTC complex, 9 storeyed, covers an area of 8.5 L sqft.. Comprising of an anchor block at its helm, the building consists of efficient and large floor plates suitable for MNCs, global majors and large trade organizations.

- Anchor block (G+5)
- Multitenant offices (G+5) & (G+8)
- Global Offices
- Retail + WTC studios



WTC AUDITORIUM
Approx. 200 capacity



The System of Fractals

Treats each individual element within the campus as part of a greater whole. The entire site is treated like a Plate that contains layers of Work and Life finding meaning in coexistence to deliver a harmonious environment. Like a pivot for the entire development, WTC Signature works in conjunction with the functions and features, delivering a hybrid eco-system.

Plate of Life

The WTC at Noida propounds a holistic 'Work + Life' balance, through its 'Plate of Life'. This plate consists of intertwined activities that support the needs of the mundane to the desire of souls, in the form of built spaces for shopping, browsing, absorbing & re-invigorating

- CONNECT: Audi-Seminars-Exhibitions
- COMMERCIAL: Shopping-Food Courts-Health & Wellness
- CULTURE: Galleries-Centre for Innovation



Modular Workspaces



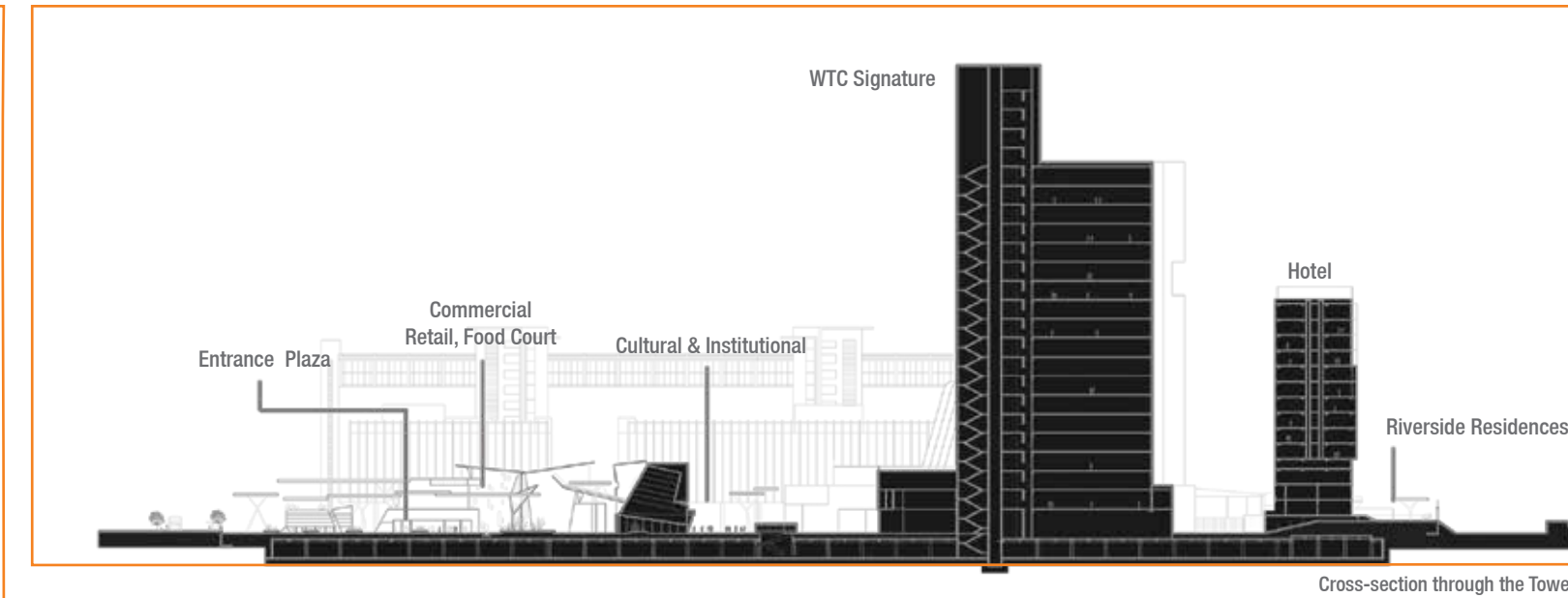
Zone of Ideas



Eco Systemic Hybrid



Plate of Life



Cross-section through the Tower

*Terms and conditions apply. On the sole discretion of the service provider.

FACT SHEET

SPACE

MASTERPLANNING

• AREAS	The tower has an approx 3.5 lac sq ft of work space area	Built to hold 3500 people
• SITE MASSING AND LAYOUT	Acting as the fulcrum of the development with integrated live-work-play functions on the ground plate	A prestigious tower with helipad
• CIRCULATION	Well-planned access at all levels through high speed elevators for quick and efficient movements	Total 5 no. lifts, with speed of 2.5m/s

INDOOR & COMMON AREAS

• OFFICE AREA	Large floor plates with modular office arrangement. Higher floor to ceiling height gives better flexibility for the IT-enabled offices	Provision for under- floor cabling and services
• ATRIUMS	Grand entrance experience with Atriums on two sides of the buildings	10 metres ceiling height of atrium
• TERRACES	Richly interspersed landscaped terraces & sky courts add diversity to utilizable space, providing breakout areas from the cold interiors	Terraces at various levels, provide spatial relief, and serve as refuge in case of fire
• PARKING	Adequate parking as part of the 18 acre single-level basement	Higher height for extendable parking.

FACILITIES

• BUSINESS CENTRE	WTC enabled world class business centre	
• EXHIBITION AREA	Large double height space on the ground floor can be utilized for exhibitions, product launches and congregation events	6m Double height of ground floor areas
• CONFERENCE	State-of-the-art facilities for seminars and conferences. Auditorium with 200 seater capacity within the complex	
• OBSERVATION DECK	Unobstructed view of the river, flood plain and development from office spaces and higher heights	Viewing deck on the top-most floor
• PLATE OF LIFE	A host of food, cultural, shopping and wellness choices within the complex	A vibrant work environment

STRUCTURE

SHELL

• SYSTEMS	Framed system and shear core atop pile foundations provides a robust framework	Designed for Zone IV earthquake detailing
• STRUCTURAL ELEMENTS	Onsite batching plant to maintain standards of concrete production. Strict testing of materials, steel and concrete mix supplemented by 3rd party testing to give the greatest level of quality assurance	Approximately 3000 MT of Steel and 30,000 cum concrete will be used
• MASONRY	Use of advanced cellular lightweight concrete blocks for walls	

ENVELOPE

• FAÇADE SYSTEM	Semi-unitized/unitized type structural glazing system is used, along with cladding for lower and core areas	Energy optimized and unique memorable imagery
• ENVELOPE	Energy Appropriate glass that is high performance and colour tinted. Earthy and textured paints and cladding materials used for non glazed surfaces	Recesses and Shading devices add fineness to the façade detail
• ROOFS	Roofs are designed as utilizable spaces, and are landscaped with vegetation and tiles	Terracing layers carry thermal insulation and water proofing under the roof

SUSTAINABILITY

ADEQUACY

• ENERGY	Efficient and Practical planning ensures that the functional, safety and comfort requirements for users are met adequately. While reducing operational costs, adequate power backup on modular basis is provided.	
• WATER	Rainwater harvesting and double run water cycle, ensures every drop counts	Zero discharge complex
• COMFORT	High efficiency chillers and advanced controls ensure indoor comfort. A mix of active and passive strategies provide for a comfortable workspace all year round.	

ACCESS & CONTROLS

• PHYSICAL	Carefully planned to secure, survey impede and detect unwanted intrusions	Layered security with various levels of access
• WIRED	Integrated solution for all voice, data and internet requirements	High speed data connection
• SAFETY	Integrated Automatic Fire Alarm and Response system that would ensure safety for all occupants irrespective of the source and extent of the emergency situation	

APPROPRIATENESS

• ARMATURE	A unique and cutting edge solution to enhance the utilization of outdoor urban spaces	Integrated to the façade of the Tower
• RENEWABLE	Harnessing the power of sun and wind	
• RESPONSIBLE DEVELOPMENT	Based on principles that promote consumption that reduces waste, and promotes recycling. An environmentally responsible and ecologically conscious way of building	Local material and flyash used. Promotes flora & fauna.



WORLD TRADE CENTER™
NOIDA

Corporate & Sales Office: GF-09, Plaza M6, District Centre, Jasola, New Delhi - 110 025

Site Office: Plot No. TZ-13A, Sector Tech Zone, Greater Noida Industrial Development Area, District Gautam Budh Nagar (U.P.)

T: 1800-1-20-40-80 | E: info@wtcnoida.org | W: www.wtcnoida.org